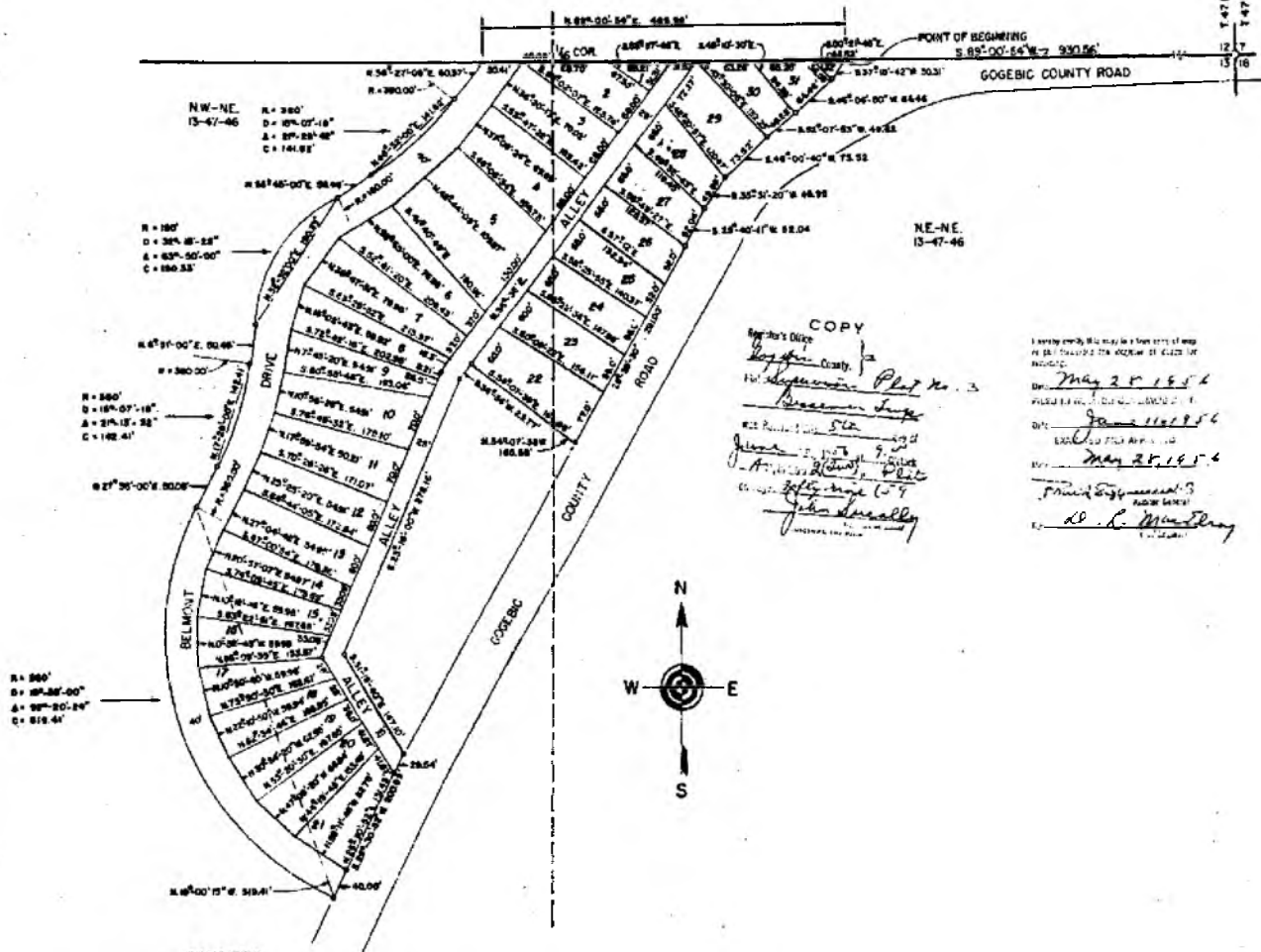


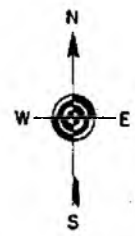
# SUPERVISOR'S PLAT NO. 3 OF BESSEMER TOWNSHIP GOGEBIC COUNTY, MICHIGAN PART OF N 1/2 OF N.E. 1/4, SEC. 13, T. 47 N., R. 46 W.

SCALE 1" = 100'  
ALL DIMENSIONS ARE IN FEET AND DECIMALS THEREOF



COPY  
Supervisor's Office  
Gogebic County  
Plat No. 3  
Bessemers  
James A. ...  
John ...

FILED FOR RECORD  
MAY 20 1914  
JAMES A. ...  
MAY 20 1914  
J. C. ...



**DEDICATION**  
KNOW ALL MEN BY THESE PRESENTS, THAT I, ARNO L. ...  
SUPERVISOR OF THE TOWNSHIP OF BESSEMER OF  
GOGEBIC COUNTY, STATE OF MICHIGAN, BY VIRTUE OF AUTHORITY IN ME VESTED BY  
SECTION 31, ACT 172, OF 1923, AS AMENDED, HAVING BEEN DULY AUTHORIZED BY THE  
TOWNSHIP BOARD OF BESSEMER TOWNSHIP HAVE CAUSED THE LAND DESCRIBED IN THE  
ANNEXED PLAT TO BE SURVEYED, Laid OUT AND PLATTED TO BE KEPT AS SUPERVISOR'S  
PLAT NUMBER 3, OF BESSEMER TOWNSHIP, GOGEBIC COUNTY, MICHIGAN, PART OF N.E. 1/4 OF SEC. 13, T. 47 N., R. 46 W. AND THAT THE  
STREETS AND ALLEYS AS SHOWN ON SAID PLAT ARE NOW BEING OPENED FOR SUCH PURPOSES.

WITNESSE  
Arno L. ...  
Supervisor of the Township of Bessemer

STATE OF MICHIGAN  
COUNTY OF GOGEBIC  
On this ... day of ... A.D. 1914, before me,  
Notary Public in and for said county, personally came the aboves named  
Arno L. ... Supervisor of Bessemer Township, leading to  
me for the purpose of executing the above dedication and acknowledged  
the same to be his free act and deed as such Supervisor.  
Notary Public in and for Gogebic County  
My Commission Expires ...

**CERTIFICATE OF MUNICIPAL APPROVAL**  
THIS PLAT HAS BEEN APPROVED BY THE TOWNSHIP BOARD OF THE TOWNSHIP  
OF BESSEMER AT A MEETING HELD AT ...  
Frank Ross, Township Clerk

**SURVEYOR'S CERTIFICATE**  
I HEREBY CERTIFY THAT THIS PLAT IS CORRECT, AND THAT PERMANENT MONUMENTS  
CONSISTING OF IRON BARS 3 FEET LONG AND 1 1/2 INCH IN DIAMETER ENCASED IN CONCRETE  
NOT LESS THAN 4 INCHES IN DIAMETER, HAVE BEEN PLACED AT POINTS MARKED (1) AS  
CORNERS, AT ALL ANGLES IN THE BOUNDARIES OF THE LAND PLATTED, AND ALL INTERSECTIONS  
OF THE STREETS WITH SAID BOUNDARIES.  
Donald A. Vorn  
REGISTERED CIVIL ENGINEER  
NO. 6392

**CERTIFICATE OF APPROVAL BY COUNTY BOARD**  
THIS PLAT WAS APPROVED BY THE ...  
DAY OF ... 1914 BY THE GOGEBIC  
COUNTY PLAT BOARD.  
Joseph ...  
Joseph ...  
Louis A. ...  
Louis A. ...  
Louis A. ...

**CERTIFICATE OF APPROVAL BY BOARD OF  
COUNTY ROAD COMMISSIONERS**  
THIS PLAT HAS BEEN EXAMINED AND WAS APPROVED  
ON THE ... DAY OF ... 1914, A.P.M.  
BY THE GOGEBIC COUNTY BOARD OF ROAD COMMISSIONERS  
George L. ...  
Arnold Mueller, Member  
Roy ...

**DESCRIPTION OF LAND PLATTED**  
THE LAND INCLUDED IN THIS PLAT OF SUPERVISOR'S PLAT  
NUMBER 3 OF THE TOWNSHIP OF BESSEMER, GOGEBIC COUNTY, MICHIGAN,  
PART OF N.E. 1/4 OF SECTION 13, T. 47 N., R. 46 W. IS DESCRIBED AS FOLLOWS:-  
STARTING AT THE N.E. CORNER OF SECTION 13, T. 47 N., R. 46 W., THENCE  
S 89° 00' 34" W. ALONG THE NORTH SECTION LINE, A DISTANCE OF 530.54 FEET TO THE  
POINT OF BEGINNING;  
THENCE S 87° 00' 00" W. A DISTANCE OF 80.51 FEET; THENCE S 45° 00' 00" W. A  
DISTANCE OF 94.48 FEET; THENCE S 30° 30' 00" W. A DISTANCE OF 74.52 FEET; THENCE S 40° 00' 00" W.  
A DISTANCE OF 135.56 FEET; THENCE S 30° 30' 00" W. A DISTANCE OF 49.00 FEET; THENCE  
S 20° 00' 00" W. A DISTANCE OF 82.04 FEET; THENCE S 28° 30' 00" W. A DISTANCE OF 27.00  
FEET; THENCE S 45° 00' 00" W. A DISTANCE OF 45.89 FEET; THENCE S 30° 30' 00" W. A  
DISTANCE OF 27.77 FEET; THENCE S 25° 00' 00" W. A DISTANCE OF 37.00 FEET;  
THENCE S 37° 40' 00" E. A DISTANCE OF 167.16 FEET; THENCE S 20° 30' 00" W. A DISTANCE  
OF 200.59 FEET; THENCE N 49° 00' 00" W. A DISTANCE OF 304.41 FEET; WHICH IS THE LONG  
CHORD OF A 37° 40' 00" CURVE, WHOSE RADIUS IS 340.00 FEET AND CENTRAL ANGLE  
W 80° 20' 00" THENCE N 77° 00' 00" E. A DISTANCE OF 50.00 FEET; THENCE N 17° 30' 00" E. A  
DISTANCE OF 142.41 FEET; WHICH IS THE LONG CHORD OF A 10° 00' 00" CURVE, WHOSE RADIUS  
IS 340.00 FEET AND CENTRAL ANGLE 10° 00' 00"; THENCE S 61° 30' 00" E. A DISTANCE OF  
80.00 FEET; THENCE S 45° 00' 00" E. A DISTANCE OF 100.51 FEET; WHICH IS THE LONG CHORD  
OF A 32° 45' 00" CURVE, WHOSE RADIUS IS 180.00 FEET AND CENTRAL ANGLE 32° 45' 00";  
THENCE N 82° 00' 00" E. A DISTANCE OF 86.48 FEET; THENCE N 40° 30' 00" E. A DISTANCE  
OF 114.82 FEET; WHICH IS THE LONG CHORD OF A 40° 00' 00" CURVE, WHOSE RADIUS IS  
340.00 FEET AND CENTRAL ANGLE 40° 00' 00"; THENCE N 30° 00' 00" E. A DISTANCE OF 60.37 FEET;  
THENCE N 80° 00' 00" E. A DISTANCE OF 404.44 FEET TO POINT OF BEGINNING.

THE NUMBER OF LOTS PLATTED IS THIRTY TWO (32)