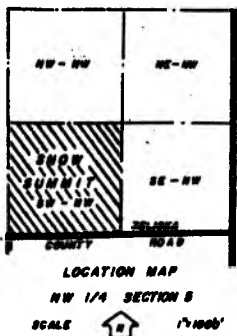


# SNOW SUMMIT

SW 1/4 - NW 1/4 SECTION 5, T 47 N, R 46 W,  
BESSEMER TOWNSHIP, GOGEBIC COUNTY, MICHIGAN



### SURVEYOR'S CERTIFICATE

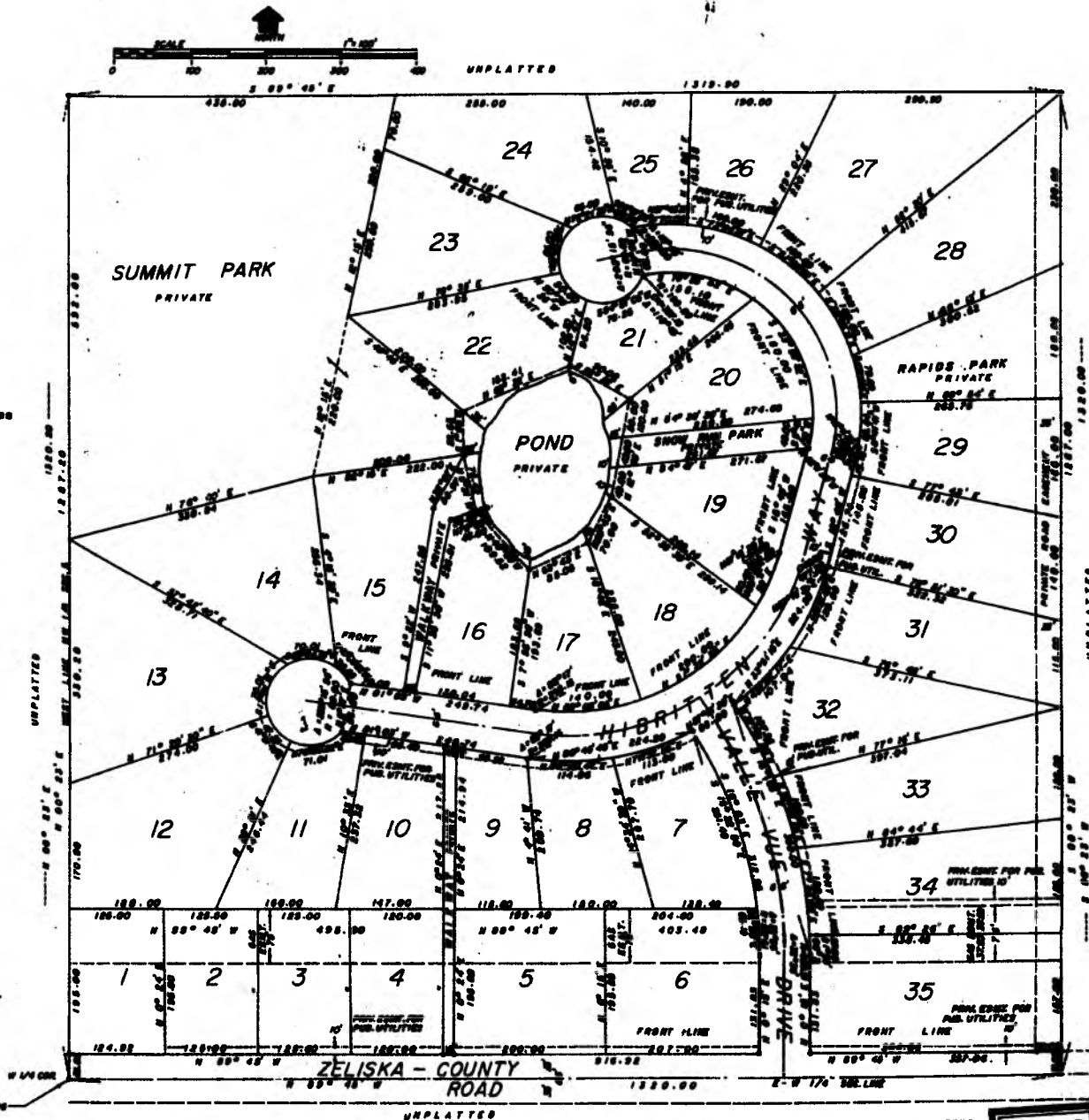
I, George B. Wilson, surveyor, certify:  
That I have surveyed, divided and mapped the land shown on this plat, described as follows: SNOW SUMMIT SW - NW 1/4 Section 5, T 47 N, R 46 W, Bessemer Township, Gogebic County, Michigan, beginning at the West 1/4 Section Corner of said Section 5, and run thence N 00° 23' E along the West line of said Section 5, 1320.20 feet; thence S 09° 45' E 1519.90 feet; thence S 09° 23' W 1320.00 feet; thence S 09° 45' W along the East-West 1/4 Section Line 1320.00 feet to the point of beginning, containing 40.00 acres of land and 75 platted lots, and three private parks.  
That I have made such survey, land division and plat by the direction of the owners of such land.  
That such plat is a correct representation of all the exterior boundaries of the land surveyed and the subdivision of it.  
That the required monuments and lot markers have been located in the ground as required by Section 125 of the Act.  
That the accuracy of survey is within the limits required by Section 126 of the Act.  
That the bearings shown on the plat are expressed as required by Section 126(3) of the Act and as explained in the legend.

November 18, 1971.

*George B. Wilson*  
George B. Wilson  
Michigan Registered Land Surveyor  
Michigan Professional Engineer  
Registration Number 17607.  
1601 15th Ave.  
Manassas, Michigan 49858.

### LEGEND

- All dimensions are in feet.
- All curve dimensions are chord lengths.
- Bearings are referenced to true north by solar observations, in accordance with Section 126(3) of the Act.
- Concrete monuments have been placed at all points marked \* . The monuments consist of 1/2 inch iron bars set in 4 inch diameter concrete cylinders 36 inches long.
- Lot corners have been marked with round iron bars 1/2 inch in diameter and 24 inches long.



POINT OF BEGINNING

UNPLATTED

SHEET 1 OF 3 SHEETS

52790