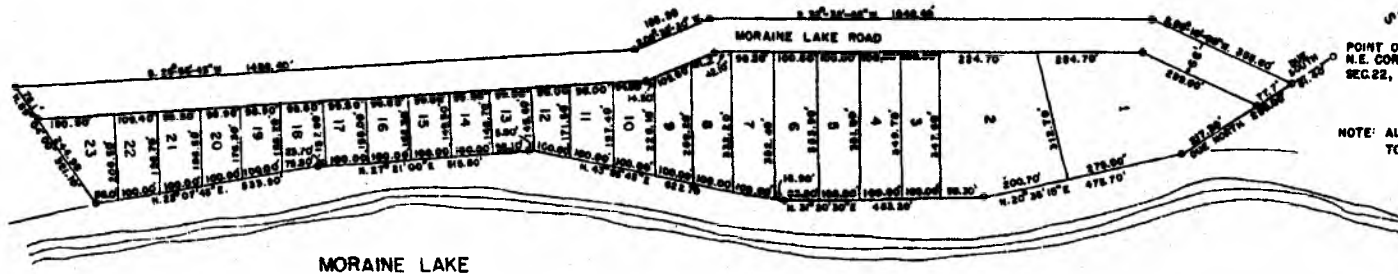


PLAT OF
MORaine LAKE OAKS

LOCATED IN
BESSEMER TOWNSHIP—GOGEBIC COUNTY MICHIGAN
PART OF U.S. GOVERNMENT LOTS 1 AND 2, S.E. 1/4 SECTION 22 TOWN 45N. RANGE 44 W.
SCALE 1"=200'

200 0 200
ALL DIMENSIONS ARE IN FEET AND DECIMALS THEREOF



POINT OF BEGINNING
N.E. CORNER S.E. 1/4
SEC. 22, T. 45N. R. 44 W.

NOTE: ALL WATER LOTS EXTEND
TO THE WATERS EDGE.

DEDICATION

KNOW ALL MEN BY THESE PRESENTS, THAT WE LOUIS V. BELANY A SINGLE MAN AND WILLIAM J. MATISIN AN, HIS WIFE NEAOMI L. MATISIN AS PROPRIETORS, HAVE CAUSED THE LAND IN THE ANNEXED PLAT TO BE SURVEYED, LAID OUT AND PLATTED, TO BE KNOWN AS MORaine LAKE OAKS LOCATED IN BESSEMER TOWNSHIP—GOGEBIC COUNTY MICHIGAN, PART OF U.S. GOVERNMENT LOTS 1 AND 2, S.E. 1/4 SECTION 22 TOWN 45N. RANGE 44 W., AND THAT THE STREETS AS SHOWN ON THIS PLAT ARE HEREBY DEDICATED TO THE USE OF THE PUBLIC.

SIGNED AND SEALED
IN PRESENCE OF

Kenneth E. Long *Louis V. Belany*
KENNETH E. LONG LOUIS V. BELANY
Mary Berglund *William J. Matisin*
MARY BERGLUND WILLIAM J. MATISIN
Neaomi L. Matisin
NEAOMI L. MATISIN

STATE OF MICHIGAN
COUNTY OF GOGEBIC

ON THIS 1st DAY OF February 1961
BEFORE ME A NOTARY PUBLIC IN AND FOR SAID COUNTY
PERSONALLY CAME THE ABOVE NAMED LOUIS V. BELANY
AND WILLIAM J. MATISIN HIS WIFE NEAOMI L. MATISIN
KNOWN TO ME TO BE THE PERSONS WHO EXECUTED THE
ABOVE DEDICATION, AND ACKNOWLEDGED THE SAME TO
BE THEIR FREE ACT AND DEED.

Agatha Wyzlic
AGATHA WYZLIC
NOTARY PUBLIC GOGEBIC COUNTY, MICHIGAN
MY COMMISSION EXPIRES FEB. 7, 1962

**CERTIFICATE OF APPROVAL BY BOARD OF
COUNTY ROAD COMMISSIONERS**

THIS PLAT HAS BEEN EXAMINED AND WAS APPROVED
ON THE 1st DAY OF February 1961 BY THE
GOGEBIC COUNTY BOARD OF ROAD COMMISSIONERS.

Roy Bennett *Joseph Mueller*
ROY BENNETT JOSEPH MUELLER
MEMBER CHAIRMAN
Peter Relich
PETER RELICH
MEMBER

**COUNTY TREASURERS CERTIFICATE RELATING
TO TAXES**

OFFICE OF COUNTY TREASURER
GOGEBIC COUNTY

I HEREBY CERTIFY, THERE ARE NO TAX LIENS OR
TITLES HELD BY THE STATE ON THE LANDS DESCRIBED
HEREON, AND THAT THERE ARE NO TAX LIENS OR
TITLES HELD BY INDIVIDUALS ON SAID LANDS FOR
THE FIVE YEARS PRECEDING THE 1st DAY OF February 1961
AND THAT THE TAXES FOR SAID PERIOD OF FIVE YEARS
ARE PAID, AS SHOWN BY THE RECORDS OF THIS OFFICE.

THIS CERTIFICATE DOES NOT APPLY TO TAXES, IF ANY,
NOW IN PROCESS OF COLLECTION BY TOWNSHIP
COLLECTING OFFICERS.

Louis A. Flippini
LOUIS A. FLIPPINI
COUNTY TREASURER

CERTIFICATE OF MUNICIPAL APPROVAL

THIS PLAT WAS APPROVED BY THE TOWNSHIP BOARD
OF THE TOWNSHIP OF BESSEMER AT A MEETING HELD
January 12, 1961 AND IS IN COMPLIANCE WITH
SECTION 18A AND THAT THE WIDTH OF LOTS CONFORMS
WITH REQUIREMENTS OF SECTION 30, ACT 172, OF 1923,
AS AMENDED.

Lauri Wiemer
LAURI WIEMER
TOWNSHIP CLERK

CERTIFICATE OF APPROVAL COUNTY BOARD

THIS PLAT WAS APPROVED ON THE 1st DAY OF Dec 1960
BY THE GOGEBIC COUNTY PLAT BOARD.

John Bucally *Rudolph Eszti*
JOHN BUCALLY RUDOLPH ESZTI
REGISTER OF DEEDS COUNTY CLERK
Louis A. Flippini *Albert Anderson*
LOUIS A. FLIPPINI ALBERT ANDERSON
COUNTY TREASURER COUNTY BOARD COMMISSIONER

DESCRIPTION OF LAND PLATTED

THE LAND EMBRACED IN THE ANNEXED PLAT OF MORaine
LAKE OAKS LOCATED IN BESSEMER TOWNSHIP—GOGEBIC COUNTY
MICHIGAN, PART OF U.S. GOVERNMENT LOTS 1 AND 2, S.E. 1/4
SECTION 22 T. 45N. R. 44 W. IS DESCRIBED AS FOLLOWS:
BEGINNING AT THE N.E. CORNER OF THE S.E. 1/4 OF SECTION 22
T. 45N. R. 44 W. THENCE PROCEED DUE SOUTH 61.40 FT. THENCE
S. 89° 10' W. 358.60 FT.; THENCE S. 32° 32' 48" W. 1048.40 FT. THENCE
S. 09° 30' W. 183.20 FT.; THENCE S. 28° 00' W. 1488.40 FT.;
THENCE N. 89° 04' E. 321.0 FT. TO THE SHORE OF MORaine LAKE;
THENCE MEASURING THE SHORE OF SAID MORaine LAKE
N. 22° 07' 45" E. 533.90 FT.; THENCE N. 27° 21' E. 518.80 FT.; THENCE
N. 43° 06' 45" E. 682.70 FT. THENCE N. 31° 20' 30" E. 483.30 FT.; THENCE
N. 20° 30' 15" E. 478.70 FT. TO A POINT WHERE THE EAST LINE OF
GOVERNMENT LOT 1 INTERSECTS THE SHORELINE OF SAID
MORaine LAKE; THENCE DUE NORTH 293.00 FT. TO POINT
OF BEGINNING. THIS PLAT CONSISTS OF 23 NUMBERED LOTS.

SURVEYOR'S CERTIFICATE

I HEREBY CERTIFY THAT THE PLAT HEREON DELINEATED IS
A CORRECT ONE AND THAT PERMANENT MONUMENTS CONSISTING
OF BARS ONE INCH IN DIAMETER AND 36 INCHES IN LENGTH,
ENCASED IN CONCRETE 8 INCHES SQUARE AND 36 INCHES IN
DEPTH, HAVE BEEN PLACED AT POINTS MARKED THUS (O) AS
THEREON SHOWN AT ALL ANGLES IN THE BOUNDARIES OF THE
LAND PLATTED, AND AT THE INTERSECTIONS OF ROAD WITH THE
BOUNDARIES OF THE PLAT AS SHOWN ON SAID PLAT.

Kenneth E. Long
KENNETH E. LONG
REGISTERED PROFESSIONAL ENGINEER
NO. 9638

1965