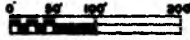


MONTGOMERY PLAT ON CHANEY LAKE

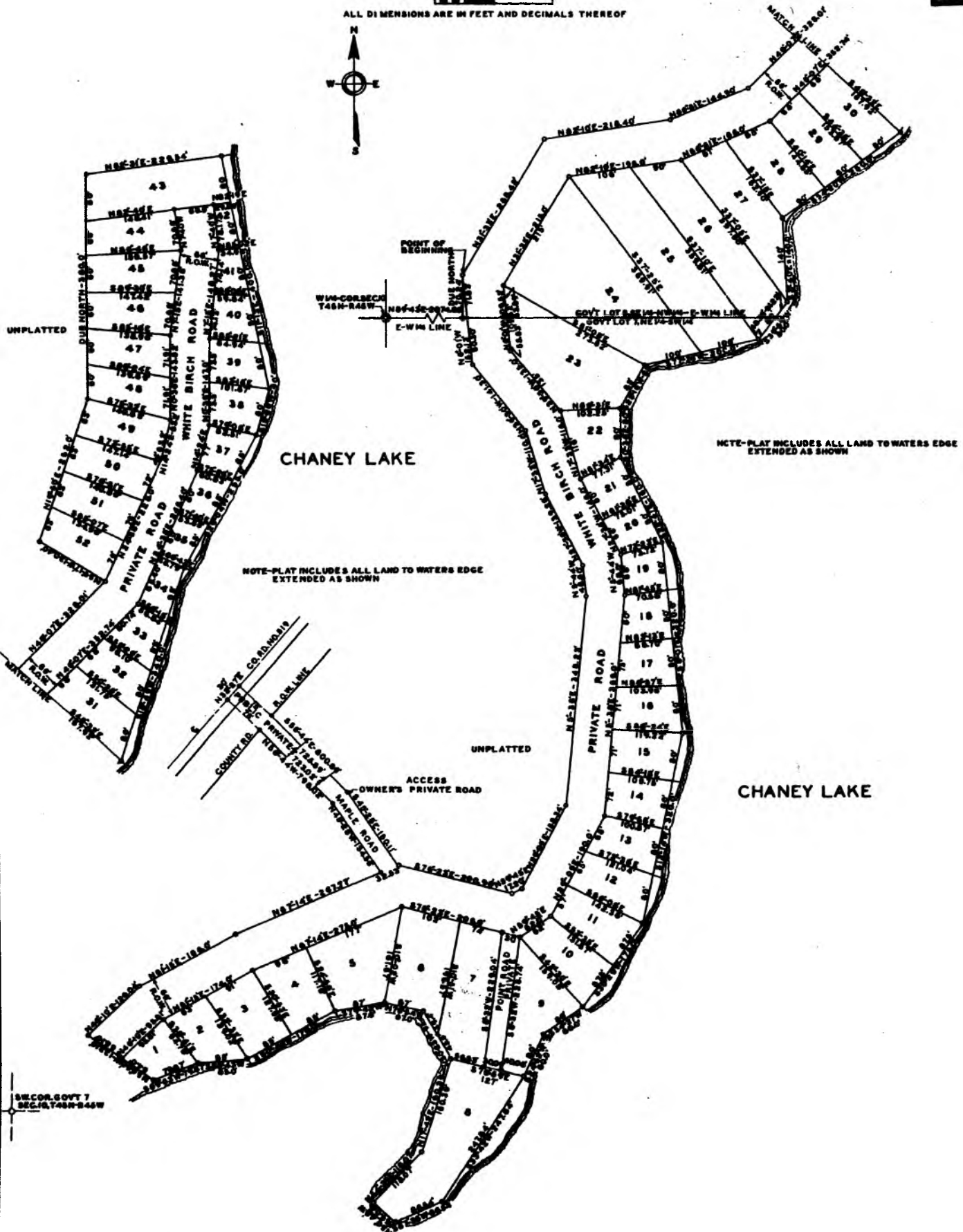
SHEET 1 OF 2

PART OF GOVT LOT 8, SE 1/4 - NW 1/4 & PART OF GOVT LOT 7, NE 1/4 - SW 1/4 - SEC. 10, T45N - R45W
BESSEMER TOWNSHIP - COGEBIC COUNTY, MICHIGAN
SCALE 1" = 100'

49686



ALL DIMENSIONS ARE IN FEET AND DECIMALS THEREOF



NOTE-PLAT INCLUDES ALL LAND TO WATERS EDGE
EXTENDED AS SHOWN

NOTE-PLAT INCLUDES ALL LAND TO WATERS EDGE
EXTENDED AS SHOWN

RECOR. GOVT 7
SEC. 10, T45N - R45W