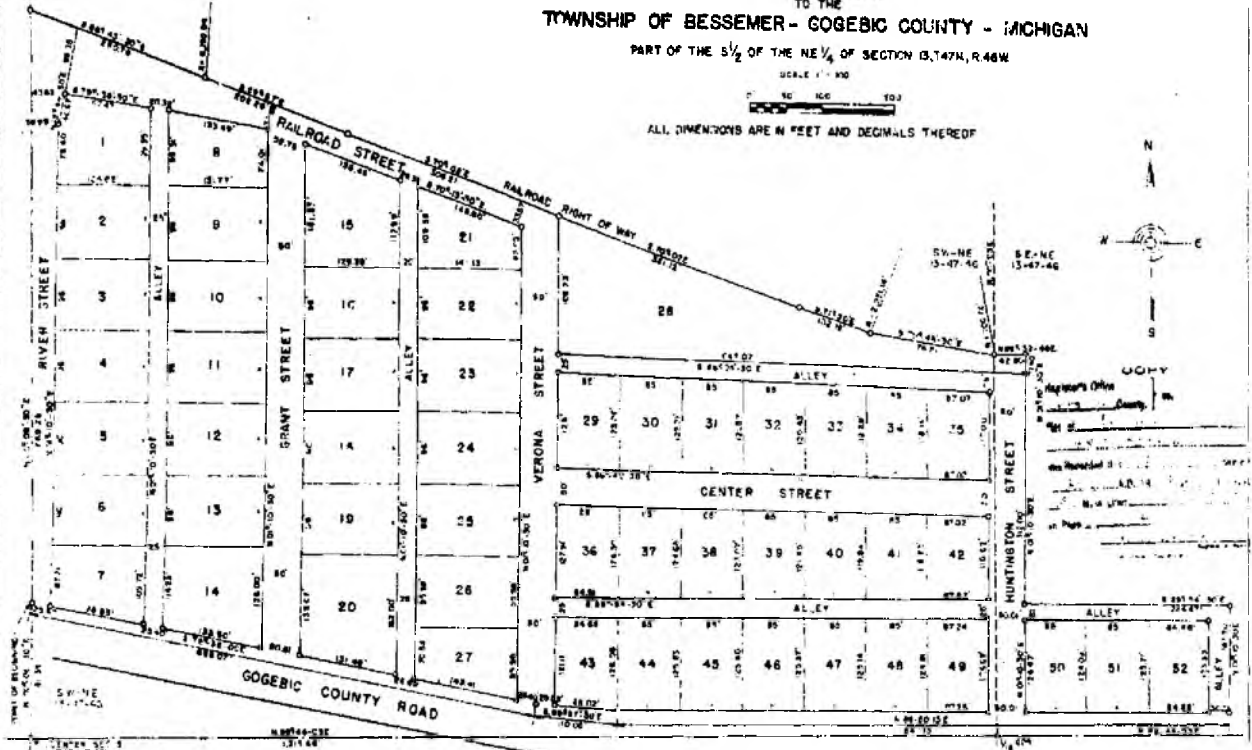


TO THE
TOWNSHIP OF BESSEMER - GOGEBIC COUNTY - MICHIGAN

PART OF THE S 1/2 OF THE NE 1/4 OF SECTION 13, T47N, R46W

SCALE 1" = 40'

ALL DIMENSIONS ARE IN FEET AND DECIMALS THEREOF



DEDICATION

KNOW ALL MEN BY THESE PRESENTS, That of The YOUNGSTOWN MINES CORPORATION, a WEST VIRGINIA CORPORATION, by JOHN SHEPHERD, its President, and K. S. BESSON, Assistant Secretary, and the NEWETMAN LAND ASSOCIATION, LIMITED, a PARTNERSHIP AGREEMENT, formed under the laws of the STATE OF MICHIGAN, by CARROLL G. TAYLOR, Chairman, and OLBERT L. STEWARD, Secretary and Treasurer, as promoters have caused the LAND PLATTED IN THE ATTACHED PLAT TO BE SURVEYED, Laid OUT AND PLATTED TO BE KNOWN AS THE EUREKA PLAT TO THE TOWNSHIP OF BESSEMER, AND THAT THE STREETS AND ALLEYS AS SHOWN ON SAID PLAT ARE HEREBY DEDICATED TO THE PUBLIC USE

SIGNED, SEALED IN PRESENCE OF
 THE YOUNGSTOWN MINES CORPORATION
 John M. Barrett, Secretary
 K. S. Besson, Assistant Secretary
 NEWETMAN LAND ASSOCIATION, LIMITED
 Carl M. Sackler, Chairman
 Robert E. Barclay, Secretary

COMMONWEALTH OF MASSACHUSETTS / SS COUNTY OF SUFFOLK

ON THIS 11th DAY OF MARCH 1926, before me a Notary Public in and for the said County appeared CARROLL G. TAYLOR and OLBERT L. STEWARD, as personally known, who being sworn by me duly sworn did say that they are the Chairman and Secretary and Treasurer, respectively of the NEWETMAN LAND ASSOCIATION, LIMITED, a PARTNERSHIP ASSOCIATION formed under the laws of the STATE OF MICHIGAN, and that the seal affixed to said instrument is the corporate seal of said association and that said instrument was signed and sealed in behalf of said association by authority of its Board of Managers and the said NEWETMAN LAND ASSOCIATION, LIMITED, acknowledged said instrument to be the free act and deed of said association

My Commission Expires _____ Notary Public, Suffolk County, Mass. Gladys Shea

COUNTY TREASURER'S CERTIFICATE RELATIVE TO TAXES

I HEREBY CERTIFY THAT THERE ARE NO TAX LIENS HELD BY THE STATE OF THE LAND DESCRIBED HEREON, AND THAT THERE ARE NO TAX LIENS OR PITTS HELD BY INDIVIDUALS ON SAID LANDS FOR FIVE (5) YEARS PRECEDING THE 1st JANUARY 1926 AND THAT THE TAXES FOR SAID PERIOD OF FIVE YEARS ARE PAID AS SHOWN BY THE RECORDS OF THIS OFFICE

THIS CERTIFICATE DOES NOT APPLY TO TAXES, IF ANY, NOW IN PROCESS OF COLLECTION BY TOWNSHIP OFF OR VILLAGE COLLECTION OFFICERS

LOUIS A. FALLOPPA, COUNTY TREASURER

CERTIFICATE OF APPROVAL BY COUNTY BOARD

THIS PLAT WAS APPROVED ON THIS 11th DAY OF MARCH 1926 BY THE GOGEBIC COUNTY PLAT BOARD

LOUIS A. FALLOPPA, COUNTY TREASURER

SURVEYOR'S CERTIFICATE

I HEREBY CERTIFY THAT THIS PLAT IS CORRECT, AND THAT PERMANENT MONUMENTS CONSISTING OF IRON BARS 3 FEET LONG AND 1/2 INCH IN DIAMETER ENCASED IN CONCRETE NOT LESS THAN 4 INCHES IN DIAMETER, HAVE BEEN PLACED AT POINTS MARKED (IF AS SHOWN) AT ALL ANGLES IN BOUNDARIES OF THE LAND PLATTED, AND ALL INTERSECTIONS OF THE STREET WITH SAID BOUNDARIES.

OSWALD A. VOSP, REGISTERED CIVIL ENGINEER No. 4398

CERTIFICATE OF APPROVAL BY BOARD OF COUNTY ROAD COMMISSIONERS

THIS PLAT HAS BEEN EXAMINED AND WAS APPROVED ON THE 11th DAY OF MARCH 1926 BY THE GOGEBIC COUNTY BOARD OF COUNTY ROAD COMMISSIONERS

George L. Melnick, Chairman
 Adolph Muel, Jr., Member
 Roy A. Hentel, Member

DESCRIPTION OF LAND PLATTED

THE LAND INCLUDED IN THIS PLAT OF EUREKA TO THE TOWNSHIP OF BESSEMER, GOGEBIC COUNTY, MICHIGAN, PART OF S. 1/2 OF THE NE 1/4 OF SECTION 13, T. 47N., R. 46W. IS DESCRIBED AS FOLLOWS:

- STARTING AT THE CENTER OF SECTION 13, T. 47N., R. 46W. THENCE N. 60° 00' 30" E. ALONG PARTY LINE A DISTANCE OF 1863.35 FEET TO POINT OF BEGINNING
- THENCE N. 00° 06' 30" E. ALONG PARTY LINE A DISTANCE OF 742.80 FEET
- THENCE S. 67° 43' 30" E. A DISTANCE OF 2307.79 FEET, WHICH IS THE LONG CHORD OF A 00° 56' 00" CURVE WHOSE RADIUS IS 2190.04 FEET AND CENTRAL ANGLE 24° 18' 00"
- THENCE S. 03° 54' 00" E. A DISTANCE OF 202.23 FEET
- THENCE S. 15° 00' 00" E. A DISTANCE OF 306.21 FEET
- THENCE S. 10° 00' 00" E. A DISTANCE OF 331.12 FEET
- THENCE S. 17° 21' 00" E. A DISTANCE OF 102.18 FEET, WHICH IS THE LONG CHORD OF A 24° 36' 00" CURVE WHOSE RADIUS IS 239.16 FEET AND CENTRAL ANGLE 02° 36' 00"
- THENCE S. 73° 48' 30" E. A DISTANCE OF 178.51 FEET, WHICH IS THE LONG CHORD OF A 02° 44' 00" CURVE WHOSE RADIUS IS 700.80 FEET AND CENTRAL ANGLE 14° 21' 00"
- THENCE N. 08° 38' 48" E. A DISTANCE OF 42.80 FEET
- THENCE S. 01° 10' 30" W. A DISTANCE OF 27.80 FEET
- THENCE S. 01° 10' 30" W. A DISTANCE OF 32.00 FEET
- THENCE S. 89° 48' 30" E. A DISTANCE OF 124.87 FEET
- THENCE S. 01° 10' 30" W. A DISTANCE OF 145.80 FEET
- THENCE S. 89° 50' 15" W. A DISTANCE OF 847.15 FEET
- THENCE N. 85° 57' 30" W. A DISTANCE OF 110.05 FEET
- THENCE N. 78° 36' 00" W. A DISTANCE OF 682.00 FEET TO POINT OF BEGINNING.

THE NUMBER OF LOTS PLATTED IS FIFTY TWO (52)

I hereby certify this map is a true and correct copy as returned to me by the Registrar of Deeds as required by law.
 Dated this 11th day of March 1926
 Wm. J. [Signature]
 Notary Public

STATE OF OHIO COUNTY OF CUYAHOGA / SS

ON THIS 24th DAY OF MARCH 1926, before me a Notary Public in and for said County appeared JOHN SHEPHERD and K. S. BESSON to be personally known, who being each by me duly sworn did say that they are the Vice President and Assistant Secretary, respectively, of the YOUNGSTOWN MINES CORPORATION, a NEW VIRGINIA CORPORATION, and that the seal affixed to said instrument is the corporate seal of said corporation and that said instrument was signed and sealed in behalf of said corporation by authority of its Board of Managers and the said YOUNGSTOWN MINES CORPORATION, acknowledged said instrument to be the free act and deed of said corporation.

My Commission Expires 4-15-28
 ELEANOR R. MURPHY

CERTIFICATE OF MUNICIPAL APPROVAL

THIS PLAT WAS APPROVED BY THE BESSEMER TOWNSHIP BOARD OF TOWNSHIP OF BESSEMER AT A MEETING HELD March 11, 1926

Frank [Signature]
 Mayor, Bessemer, Michigan